

front page	Elm Bank (cover story)
page two	Debenhams The Co-operative Group
page three	Travis Perkins Hampton Brook Frameworks
page four	Avery Healthcare Bedford Girls' School
page five	20th Anniversary Legal/Website Update
back page	Goodrich Gossip

GOODRICH news

Prestigious Care Village in Kettering!

Kettering Care Village completed in July 2011 and opened its doors to the elderly in August last year. The care home is part of an exclusive new development that incorporates Elm Bank Villa, a Grade II Listed building, built in 1894. The villa was restored and renovated to its original glory to provide a 10 bed care hotel.

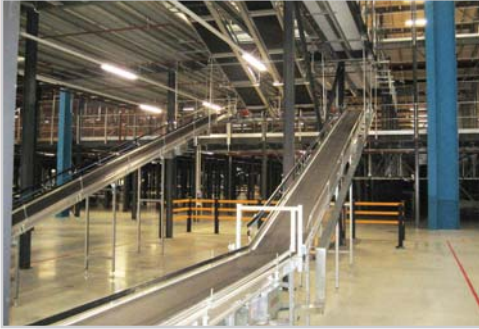
The surrounding extension has been built in a series of link blocks providing a further 95 bedrooms and associated facilities. The new link blocks have been designed in keeping with the Victorian style villa. The care home provides residential and dementia care to the Kettering area on both a long and short term, respite basis and will be run to the exacting standards of all Avery Healthcare homes.



Debenhams...

DEBENHAMS

SHERBURN ENTERPRISE PARK, Sherburn



Goodrich Projects acted as Project Manager, Quantity Surveyor and CDM Co-ordinator on the fit-out of an existing 666,989 sq ft warehouse in Sherburn, Elmet for Debenhams.

The existing warehouse has a 12,452 sq ft adjoining office and 58 dock levellers which were refurbished in the fit-out, as well as a new three storey integral office constructed in addition to the existing one.

Works on the fit-out started in October 2010 and were completed in phased sections. The first sectional completion in March 2011 consisted of the construction of a new three storey despatch office, break out area, drivers lobby, office and the MHE and maintenance storage area. Two new gatehouses have also been built with vehicular

barriers and intercoms.

Section 2 of the works included installation of the pallet racking, completion of the sprinkler system, construction of the three storey offices and installation of a canteen. The warehouse became fully operational in December 2011.

Peter Mitchell, Associate, said "Debenhams have now taken occupation of this superb hi-tech National Distribution Centre. Works consisted of a 4 level mezzanine, 180,630 sq ft per level, containing racking storage on all levels and an MHE facility installed for both hanging garments and cartonised boxed goods, 100,000 litre fuel facility, full generator back up provision and M&E services throughout".



The Co-operative Group...



POLAR WAY WEST, Avonmouth

Goodrich are delighted to have been appointed as Project Manager, Quantity Surveyor and CDM Co-ordinator on this 430,000 sq ft cross-dock style distribution centre in Avonmouth.

The 32 acre site forms part of a 93 acre facility which was partly occupied by Honda Motor Europe, now owned by Stoford Developments. The facility includes integral offices and operations office. The whole warehouse facility will be fully operational in May 2012.



The co-operative

CASTLEWOOD, Nottinghamshire

Following the appointment of Avonmouth and successful completion at Andover we have been appointed on the design and construction of a new 472,000 sq ft single storey temperature controlled warehouse / production facility with attached offices, two storey warehouse offices, de-kit area and energy centre. External areas include vehicle maintenance wash, weigh bridge and VMU.

The warehouse is located off the M1 near Junction 28 and will serve the Co-operative stores across the region.



Base Build works began in December 2011 with the fit-out due to commence in October 2012. The warehouse will be fully operational in early 2013.

Travis Perkins...

RADWAY ROAD, Solihull

Goodrich were delighted to have been appointed as Project Manager and Quantity Surveyor on their second project for Builders' Merchant giant Travis Perkins in Solihull. The new development comprises three terraced industrial units incorporating a Travis Perkins Branch and a Benchmarx outlet totalling 30,000 sq ft.

The units have been constructed on Radway Road, Solihull in place of a derelict factory building that has stood empty for many years.

Works commenced on site in April 2011 and completed in October 2011.

Paul Riley, Project Manager at Goodrich, said, "This was a really exciting project for Travis Perkins as I believe this is the first mixed use branch development that Travis Perkins (Properties) have developed".

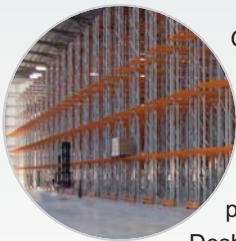


This follows the successful completion of the new Travis Perkins Branch building at Bolton and Bury Road, Radcliffe in May 2011.

Goodrich are also delighted to announce our appointment on a third project in Macclesfield. The project comprises renovation of an existing Ford Car Showroom complex with a 10,000 sq ft new build Travis Perkins Branch. Paul stated, "This new unit will be a breath of fresh air for the Fence Avenue Industrial Park". This development is subject to planning but is expected to start early 2012.

Hampton Brook...

GREAT BEAR, Wirral



Goodrich are delighted to announce completion of the construction of a 170,000 sq ft warehouse facility with integral two storey office for Hampton Brook Estates located in Bromborough, Wirral. This facility will be occupied by Great Bear Distribution which is the second project we have carried out following the first warehouse in Desborough.



We acted as Project Manager, Quantity Surveyor, CDM Co-ordinator and BREEAM Assessor on this distribution facility which completed in December 2011. The scheme is also projected a BREEAM 'Excellent' rating. The 18m high facility has a fully racked warehouse and incorporates semi-automated MHE.



Frameworks...

ST ANDREW'S HEALTHCARE



After going through a detailed pre-qualification process we have been accepted onto the St Andrew's Healthcare Consultancy Framework to act in the following disciplines:- Project Manager, Cost Consultant, CDM Co-ordinator, Employer's Agent and BREEAM Advisors. The first project we have been awarded is the refurbishment of Cliftonville House in Northampton, previously council offices. The building will accommodate the Estates Services Department. Works have commenced on site and are due to complete in summer 2012.

LEGAL & GENERAL PROPERTY

As one of Legal & General's appointed Project Manager and Cost Consultant's through their framework agreement, we are acting for their Life Fund on an industrial / commercial scheme at Borehamwood. The scheme comprises six industrial and trade counter units totalling 110,000 sq ft and will be submitted for planning in early 2012. Following demolition, construction is expected to start in the third quarter of 2012.



Avery Healthcare...



ACER HOUSE CARE HOME, Weston Super Mare

Goodrich acted as Buyer's Agent on this new 60 bedroom turnkey project for Avery Healthcare. The home offers residential, dementia and respite care and completed in October 2011.

The home is located in a desirable location adjacent to Ashcombe Park and 1 mile from Weston Super Mare seafront on Milton Road. The development offers the very latest in care home design.



CLIFTONVILLE CARE HOME, Northampton

Another striking development that is already open for business after completion in May 2011. Cliftonville Care Home is situated on a prominent large corner plot of 1.5 acres next to Northampton General Hospital and offers residential, nursing and dementia care.

The design has been heavily influenced by the local vernacular where influences from Georgian townhouses to 1970s office blocks have been combined to produce a striking contemporary design interpreting these influences into a landmark building suitable for such a prominent site. Cliftonville Care Home also achieved a BREEAM rating of 'Very Good'.



NEWCROSS CARE HOME, Wolverhampton

Newcross Care Home in Wolverhampton completed in July 2011 and is open to the elderly to provide dementia, residential and respite care. This care home has an individual appearance because of its aesthetic circular design to the front section that can be seen from the road.

The site was previously occupied by the Prestwood Arms pub that was demolished to make way for the new 62 bedroom care home which incorporates the most up to date design features and technologies and beautiful landscaped gardens.



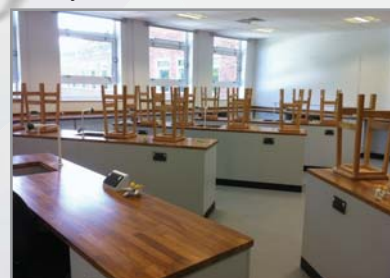
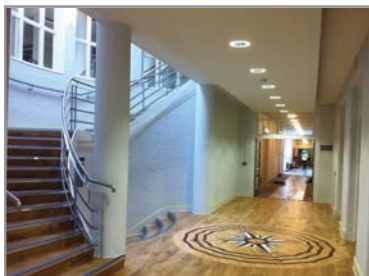
Bedford Girls' School...

Goodrich managed the extensive construction works associated with the creation of The Bedford Girls' School, a new selective independent day school for girls aged 7-18 formed through the merger of Bedford High School for Girls and Dame Alice Harpur School. The School is located on the current Dame Alice Harper School, Cardington Road, Bedford site.

This project was extensive and complex with the challenges magnified through the limited period available for completing the work through the 7 weeks of the summer holiday.

Goodrich managed this project through to successful completion by working closely with the School, Archial Architects, Scott White & Hookins, Orpheus Consulting Engineers and SDC Special Projects. Works included a new canteen servery, two new wet labs, three ICT rooms, refurbished staff areas, an entirely new music school with specialist tutorial rooms, re-decoration throughout the existing main school spaces and the construction of a new surface car park.

Goodrich were appointed as Project Manager, Quantity Surveyor and Move Manager on this innovative project. The works involved a complex mix of refurbishment and new build within the existing school campus, some of which is designated as Grade II Listed.



Goodrich's 20th Anniversary...

2012

1992

1992 seems a very long time ago and it is! In those days the Goodrich team was a one man band. The first major project I was awarded was Tanswell's Vauxhall/Rover car showroom at Towcester. Now 20 years on and we have a much larger team and have been awarded some fantastic projects ranging from £1 million to £45 million. We are now known as 'Shed' experts having completed major distribution facilities for blue chip Developers and Retailers. Over the last 5 years we have burst into the Care Home sector in which we have gained excellent knowledge. More recently we have carried out work in the Education and Healthcare sectors proving we can provide the same high standard of expertise and service whatever the nature of the project.



We carry out projects throughout the UK from our Midland based office ideally situated off Junction 15 of the M1. We have a superb team who have continually strived to go the extra mile for all our Clients no matter how challenging the project. 2011 has been another busy year and despite the current economic climate we are looking forward to a busy 2012.

A massive 'Thank you' to all our Clients for their support over the last 20 years.

- Richard Goodenough,
Managing Director



CONSTRUCTION ACT - Jason Denning

The new Construction Act changes came into force in October 2011 and Goodrich are here to help!

Instead of publishing a set of amendments to the JCT suite of contracts, a completely new JCT 2011 contract has been issued. Therefore firms will need to purchase a new suite of contracts for the main contractor and / or sub-contractor.

The changes are summarised below:

- The payment provisions of construction contracts, sub-contracts and consultant appointments may need to be substantially changed
- Payment Notices – references to 'withholding' will need to be amended to 'payless'
- Suspension provisions – Reasonable costs (consequential)
- Adjudication costs – Allocation of costs to parties
- Contract not in writing – Legal fees
- Changes to the insolvency definition and updating of the statutory reference to the Bribery Act 2010

Please call Jason Denning if you require further information
on: 01604 859859

GOODRICH

Search Client Area Login

Sustainability
GOODRICH

Website Update...

12 months after the launch of our new website we are pleased to announce that it has been a great success. The introduction of the Client Area is now being used as a tool for two of our major Clients; The Co-operative Group and Travis Perkins. We have had excellent feedback on the information the Client area has provided and are hopeful we can introduce this tool to others.

Tenders have been sent out over the intranet providing a much quicker service, enabling Contractors maximum time to collate their information for the return dates rather than relying on the postal system.

This is also very useful when sending large documents to Clients and Contractors that are too large for sending via email.

We are looking to develop our website further with the introduction of video and the prospect of receiving return tenders through the net.

www.goodrichprojects.co.uk



GOODRICH
 Goodrich Projects, Gayton Road
 Milton Masdon, Northampton, NN7 3AB
 Tel: 01604 859988 Fax: 01604 859988
 www.goodrich-projects.co.uk

Chartered Quantity Surveyors
 Project Managers
 Building Surveyors
 CDM Co-ordinators
 BREEM Assessors

GOODRICH GOLF DAY 2011

It was that time of year again where the Goodrich team polished the golf clubs and put on the white polo shirts for a day of golf with colleagues and Clients to raise money for the Warwickshire and Northamptonshire Air Ambulance Charity. The event was held at Collingtree Golf Club for 18 holes followed by dinner and drinks in Green's Restaurant. The weather also played a fantastic part in making the day enjoyable for all.

Thank you to all who donated. The money was raised from the dreaded 18th hole charity challenge, where quite a few golfers made a splash!

Well done to Pete Mitchell's team for swooping 1st prize even though they were nicknamed 'The Bandits'.



BABY BOOM AT GOODRICH

We would like to say a big congratulations to Mark Plowman and Marie on the safe arrival of baby Grace. Louise Banner and fiancé Craig are expecting their first and Simon Skinner and wife Anne are expecting their second bundle of joy. Good luck to you all!



RALLY RACING IN EUROPE

BON VOYAGE ADAM

We have said a sad farewell to Adam Green who has left us to go travelling in Australia for a year. Adam started his adventure in Sydney and will be making his way up and down the country. Adam will be missed by all at Goodrich.



Our very own action man Thomas Chatterton has been on the move again this year! Tom and two of his friends bought a Porsche from ebay and transformed it into a racing machine spraying it in martini racing colours. They entered into Czech Wrecks Rally starting in England and racing through France, Switzerland, Italy, Austria, Czech Republic, Germany, Holland and Belgium before ending up back in England. Along their speedy travels they raised £800 for Cancer Research. Well done boys!



RICHARD TURNS THE BIG 50!

Richard Goodenough, MD, turned 50 last July and we all celebrated with a surprise trip to London's Ice Bar followed by a cruise down the Thames with dinner, live music and drinks. From the picture above it seems Paul Riley had consumed more alcohol than others!